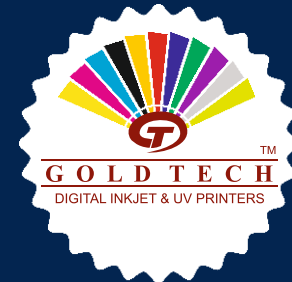


ECO SOLVENT PRINTER

3.2m with Epson i3200 printhead



Q-jet 3302i

Dual Heads

4 Color

Variable Dot

3-Stage Heater



Eco Solvent Printer | Q - jet 3302i



● Features



Epson Precision Core Printhead

Equipped with Epson i3200 special printhead, powered by Epson Precision Core technology. Born for fast speed and long-term running.



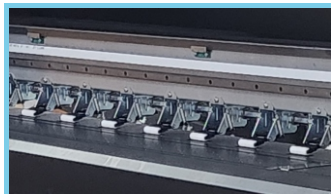
Heating and Drying System

Front and middle and rear heating system and front drying fan are standard equipped to help dry the printed material fast.



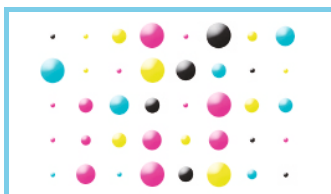
Anti-collision Function

Anti-collision system is equipped to protect the printhead and carriage all the time.



Branded parts

Greatly increased the lifetime and stability of the machine. For example, Hiwin guide rail, German Igus drag chain, Italian Megadyne belt.



Variable Dot Print Technology

Permitting the printer to provide smooth gradations, exceptional solid colors and optimum image quality in all print modes.

- ★ New look has heavier, larger structure, and wider printing platform
- ★ High accuracy of carriage movement
- ★ Dual feeding bar for loading heavy media
- ★ Optional infrared heater for drying prints quickly
- ★ Integrated temperature controller



● Specification

Model No.			
Printhead	2×Epson i3200	1×Epson i3200	
Resolution	2400dpi max		
Ink Color	CMYK	CMYK	
Media	Size	3.2 meter	
	Types	Flex Banner , Vinyl, One Way Vision, Banner Cloth, Window Film, Mesh Etc.	
Speed	Draft 3pass	48 m ² /h	24 m ² /h
	Production 4pass	32 m ² /h	16 m ² /h
	Quality 6pass	24 m ² /h	12 m ² /h
Ink Type	Eco Solvent Ink		
Ink Droplet	1.5-27pl variable		
Cleaning	Cleaning with Button , Anti-Clogging Flash Function & Negative Pressure System		
Feed & take up	Automatic Media Feeding (Standard) & Take up System		
Environment	Temperature: 20-24°C, Humidity: 40%-60%		
Rip Software	RIIN 7.2 / FlexiPRINT (Optional)		
Interface & System requirement	USB 3.0 & i5 10th Gen 512 SSD, 8GB Ram, Windows 10 64bit		
Power	Machine 50/60HZ, 220V, 4200W Including IR & Bed Heaters		
Size & Weight	Machine	L4400×W820×H1700 mm / 380 KG	
	Packing	L4550×W900×H780 mm / 540 KG	

Specifications are subject to change without notice. *Note: Printing Speed is vary on Father Mode & Quality Mode

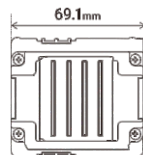


Fastest Eco-Solvent 10' Printer for Flex & Vinyl Printing
with 1440 dpi 1.5pl dot size
with Negative Pressure, & Automatic Ink Section

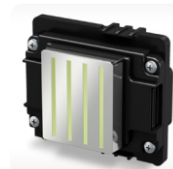
Q - jet 3302i

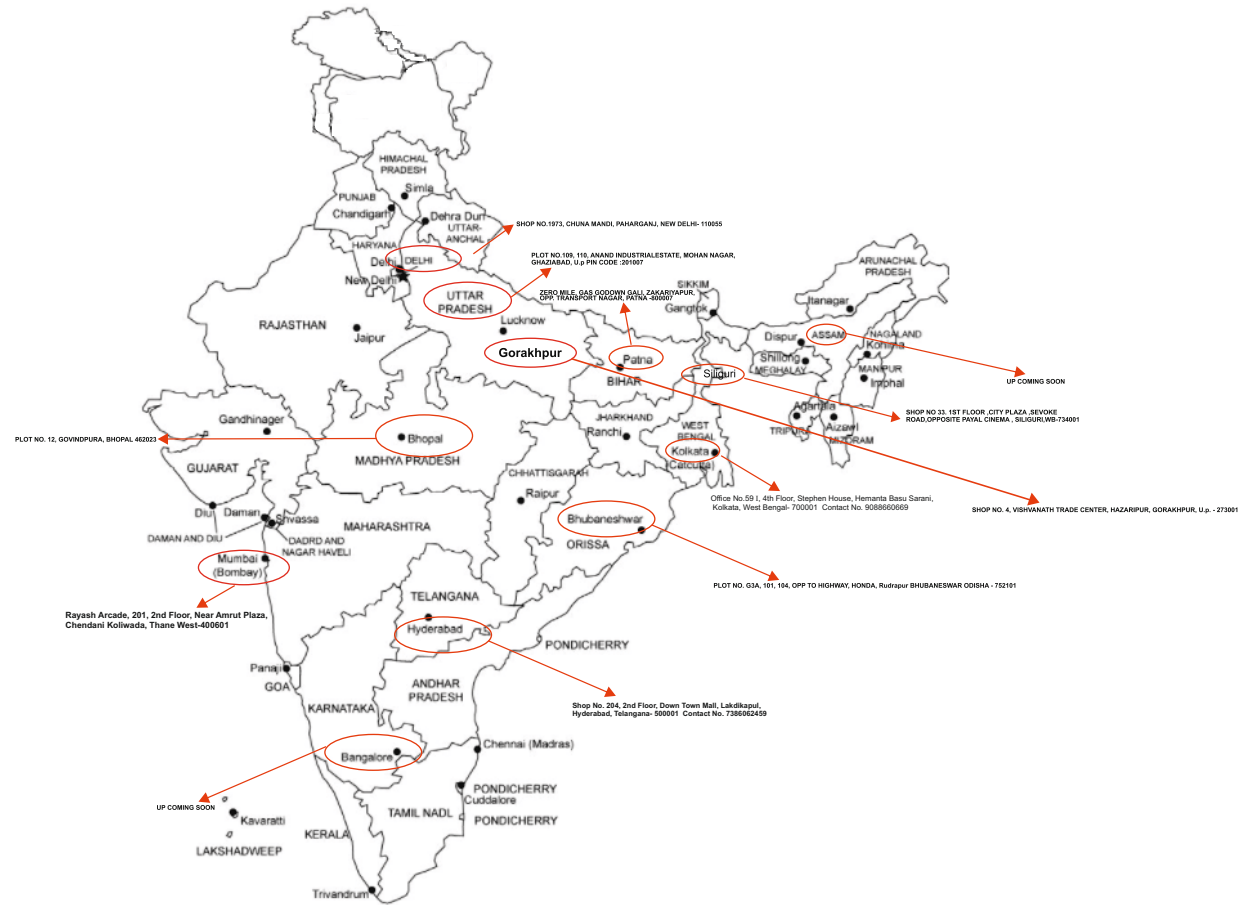


Powered by :



EPSON®





Goldtech Graphics Pvt. Ltd.

Corp. Office: Shop No.1973, Chuna Mandi, Paharganj, New Delhi - 110055
 Factory: Plot No.109/110, Anand Industrial Estate, Mohan Nagar, Ghaziabad, U.P. - 201007
 Contact : +91-9818-3609-56, +91-9205-131374 E-mail : goldtechgraphics@gmail.com
 Website : www.goldtechgraphicsinfo.com www.goldtechgraphics.com/shop.com

BRANCHES:

- Bhopal** : Plot No. 12, Govindpura, Bhopal, Madhya Pradesh - 462023 Contact No.+91-9810897344
- Kolkata** : Office No.59 I, 4th Floor, Stephen House, Hemanta Basu Sarani, Kolkata, West Bengal- 700001 Contact No. 9088660669
- Siliguri** : Shop No. 33, 1st Floor, City Plaza, Sevoke Road, Opp. Payal Cinema, Siliguri, W.B. -734001 Contact No.+91-8882264736
- Hyderabad** : Shop No. 204, 2nd Floor, Down Town Mall, Lakdikapul, Hyderabad, Telangana- 500001 Contact No. 7386062459
- Mumbai** : Rayash Arcade, 201, 2nd Floor, Near Amrut Plaza, Chendani Koliwada, Thane West-400601 Contact No. +91-8668879074
- Bhubaneswar** : Plot No. G3A, 101, 104, Opp to Highway, Honda, Rudrapur, Bhubaneswar, Odisha - 752101 Contact No. +91-9088660669
- Patna** : Zero Mile, Gas Godown Gali, Zakariyapur, Opp. Transport Nagar, Patna, Bihar -800007 Contact No. +91-9279490208
- Gorakhpur** : Shop. No. 4, Vishvanath Trade Center, Hazaripur, Gorakhpur, U.P. - 273001 Contact No. +91-6387392226