



# ECO-SOLVENT

*Pantherjet 1601Zx*

**With Epson i3200 Printhead**



**EPSON®**

**Industrial Grade High resolution ECO-SOLVENT Printer**

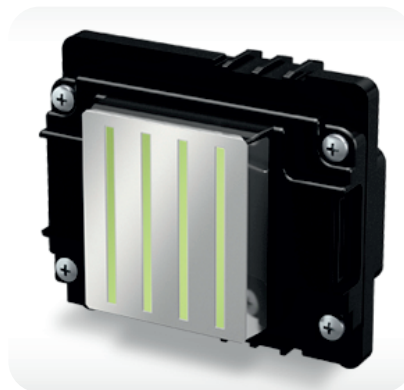
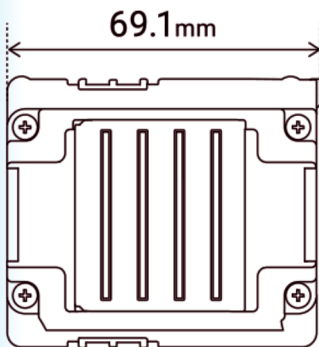


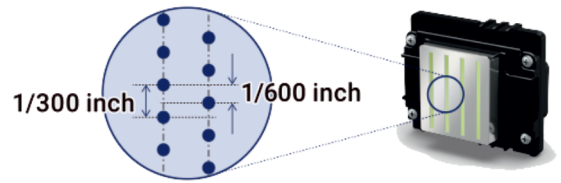
*New Upgraded Technology  
with Epson i3200 Printhead*



*Pantherjet 1601Zx*

**EPSON®**





High density Printhead

# Pantherjet Eco-Solvent Printer

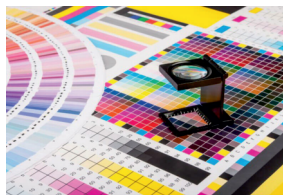
Specification	Pantherjet i3200/1	Pantherjet i3200/2
Printhead	Micro piezo i3200 print head	
Inks	Eco-Solvent based	
Maximum printing width	150cm	180cm
Resolution	720dpi, 1440dpi, 2880dpi	
Printing modes	3pass, 4pass, 6pass, 8pass, 12pass	
Speed with single Print head	20m <sup>2</sup> /h, 14m <sup>2</sup> /h, 10m <sup>2</sup> /h, 7m <sup>2</sup> /h, 5.5m <sup>2</sup> /h	
Speed with two Print heads	40m <sup>2</sup> /h, 28m <sup>2</sup> /h, 20m <sup>2</sup> /h, 14m <sup>2</sup> /h, 11m <sup>2</sup> /h	
Ink cassette capacity	1000cc/color	
Three heating sections	None	Pre-heater, printing bed heater, rear heater 30 °C-65°C
Picture drying system	Standard configuration: Infrared heating with fan drying system	
Auto feeding/collecting system	Standard configuration	
Environmental conditions	Temperature 15-25°C Relative Humidity : 40%-65%	
Dimensions(L*W*H)/Weight	240x75x130cm	Gross Weight: 300kg Net Weight: 200kg

\*Note: Printing Speed is vary on Father Mode & Quality Mode



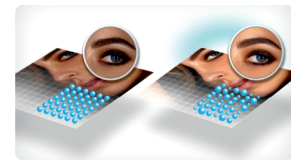
## New Variable Dot Technology

Goldtech unique Variable Sized Droplet technology (VSDT) delivers smooth gradation by freely control to eject the droplet volume.



## Original ICC Profiles

The Goldtech support provides a batch of free icc profiles for different major media and inks, that saves the user a lot of time to start production. If need for Different Media Print then you need to create new icc profiles for your requirements.



## Print Sharpness Quality

Goldtech UV flatbed printers can separately control dropletsize for process color management (PCM), this capability is useful for high quality photo printing, printing effect showing very sharp.





# Goldtech Graphics Pvt. Ltd.

Corp. Office: Shop No.1973, Chuna Mandi, Paharganj, New Delhi - 110055

Factory: Plot No.109/110, Anand Industrial Estate, Mohan Nagar, Ghaziabad, U.P. - 201007

Contact : +91-9818-3609-56, +91-9205-131374 E-mail : goldtechgraphics@gmail.com

Website : www.goldtechgraphicsinfo.com www.goldtechgraphics.com/shop.com

## BRANCHES:

**Bhopal :** Plot No. 12, Govindpura, Bhopal, Madhya Pradesh - 462023 Contact No.+91-9810897344

**Kolkata :** Office No. 4Q, 4th Floor, Toddi Mension, Opp. Poddar Court, Kolkata. W.B. -700073 Contact No.+91-8800455167

**Siliguri :** Shop No. 33, 1st Floor, City Plaza, Sevoke Road, Opp. Payal Cinema, Siliguri, W.B. -734001 Contact No.+91-8882264736

**Hyderabad :** Shop No.106, First Floor, DownTown Mall, Lakdi-Ka-Pul, Hyderabad, Telangana- 500001 Contact No.+91-7386062459

**Mumbai :** Shop No.8, Sanskruti 1, Behind Kotak Bank , Shanti Vihar, Mira Road East, Mumbai M.H.- 401107 Contact No. +91-8668879074

**Bhubaneswar :** Plot No. G3A, 101, 104, Opp to Highway, Honda, Rudrapur, Bhubaneswar, Odisha - 752101 Contact No. +91-9088660669

**Patna :** Zero Mile, Gas Godown Gali, Zakariyapur, Opp. Transport Nagar, Patna, Bihar -800007 Contact No. +91-9279490208

**Gorakhpur :** Shop. No. 4, Vishvanath Trade Center, Hazaripur, Gorakhpur, U.P. - 273001 Contact No. +91-6387392226