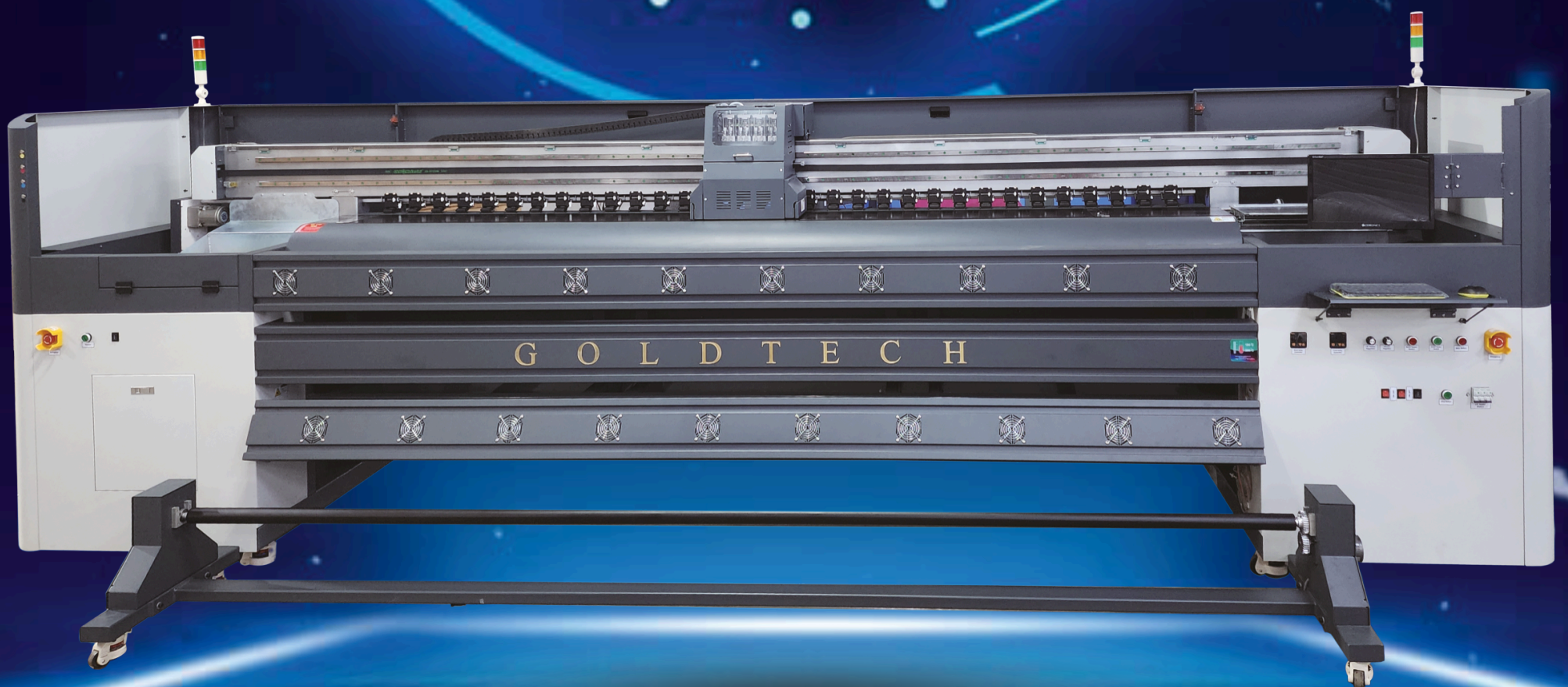




Stormjet -HQ 3304/8KH1



**Industrial Grade High resolution Stormjet-HQ
Printing Machine**



GOLDTECHTM
DIGITAL INKJET & UV PRINTERS

Stormjet-HQ 3304/8KH1

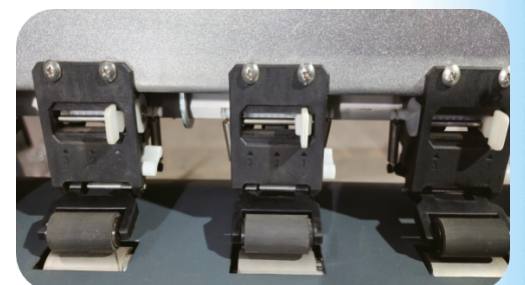
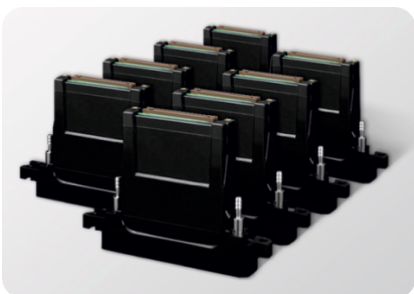


Black (nitration) roller
www.helitn.com

HIWIN
Motion Control and System Technology



KONICA MINOLTA



Solvent Printer with Konica Minolta 1024i 30pl Head

Model	Stormjet HQ-3304KHi/PL		Stormjet HQ-3304KHi/PL	
	W/o Fether	With Fether	W/o Fether	With Fether
Printhead	KONICA 1024i 30pl		KONICA 1024i 30pl	
Number of Printhead	4		8	
Number of Head Nozzle	1024		1024	
Maximum Bed Width	3300 mm		3300 mm	
Maximum Print Width	3200 mm		3200 mm	
Print Speed :				
360x360, 1Pass	230 sqm/hr		460 sqm/hr	
360x720, 2Pass	180 sqm/hr	150 sqm/hr	360 sqm/hr	300 sqm/hr
360x1080, 3Pass	135 sqm/hr	110 sqm/hr	270 sqm/hr	220 sqm/hr
Color	CMYK			
Media	Paper, Advertising Banner, PVC, Mesh, Vinyl, Window Film & Canvas			
Resolution	Up to 1440 dpi			
Media Feeding	Auto Feeding, Auto Take up/Roll Less than 105kg			
Motion Control	JMC 750w X Motor & Driver and Y Ac Servo Motor & Driver for High Speed Printing (Panasonic optional)			
Auto Cleaning System	Negative Pressure Cleaning, Solvent Cleaning & Anti Clogging Flash Function			
Media Heating	Pre Heater, Post Heater, Infrared Heater & Cooling Fan System both			
Image Format	Bitmap, JPEG, PDF, TIFF (Recommended)			
Color Management	Superior ICC Profile			
Work Flow	RIP and Print not same time; print after RIP			
Ink Printing Function	Negative Pressure System with Glass Type Subtank & Spyda Solenoid Valve			
Ink Type	Eco-Solvent/Solvent Based Ink			
Software	Photo Print/ Maintop / Ultra Print (Recommended)			
Print Head Height	5mm (Maximum)			
Work Station	Windows 10 64bit or Windows 7 32/64 bit			
Voltage	200V- (+10%) > 15A, 50Hz /60Hz			
Power Consumption	2500W (220vAC) with Heater 4,500W with Infrared Heater 7500W (220vAC)			
Working Environment	Temperature : 20 C - 28 C, Humidity : 40% -60%			
Machine Dimention	Length: 5.28M; Width: 1.38M; Height 1.66 M;			
Machine Weight	Gross 1550kg ; Net Weight : 1280kg (Approx)			





Goldtech Graphics Pvt. Ltd.

Factory: Plot No.109/110, Anand Industrial Estate, Mohan Nagar, Ghaziabad, U.P. - 201007
 Contact : +91-9818-3609-56, +91-9205-131374 E-mail : goldtechgraphics@gm
 Website : www.goldtechgraphicsinfo.com www.goldtechgraphics.com/shop.com

BRANCHES:

BHOPAL

Plot No. 12, Govindpura, Near Symphony Mall, Bhopal – 462023
 +91-98108 97344

KOLKATA

Room No. 591, 4th Floor, Stephen House,
 56E Hemanta Basu Sarani, Kolkata – 700001
 +91-74494 37877

SILIGURI

Shop No. 33, 1st Floor, City Plaza, Sevoke Road,
 Opp. Payal Cinema, Siliguri – 734001
 +91-88822 64736

HYDERABAD

Shop No. 106, First Floor, Down Town Mall,
 Lakdi-Ka-Pul, Hyderabad – 500001
 +91-73860 62459

DELHI

Shop No. 1973, Chuna Mandi, Paharganj, New Delhi – 110055
 +91-98183 60956

MUMBAI (MAHARASHTRA)

Office No. 201, Rayansh Building, Thane – 400602
 +91-77449 97342

GORAKHPUR

Shop No. 4, Vishwanath Trade Center, Hajipur,
 Gorakhpur – 273001
 +91-73093 49252

BHUBANESWAR

Plot No. G3A, Opp. Highway Honda, Rudrapur, Odisha – 752101
 +91-90886 60669

PATNA

Zero Mile, Jakariyapur, Near Akash Banquet Hall,
 Opp. Transport Nagar, Patna
 +91-92794 90208