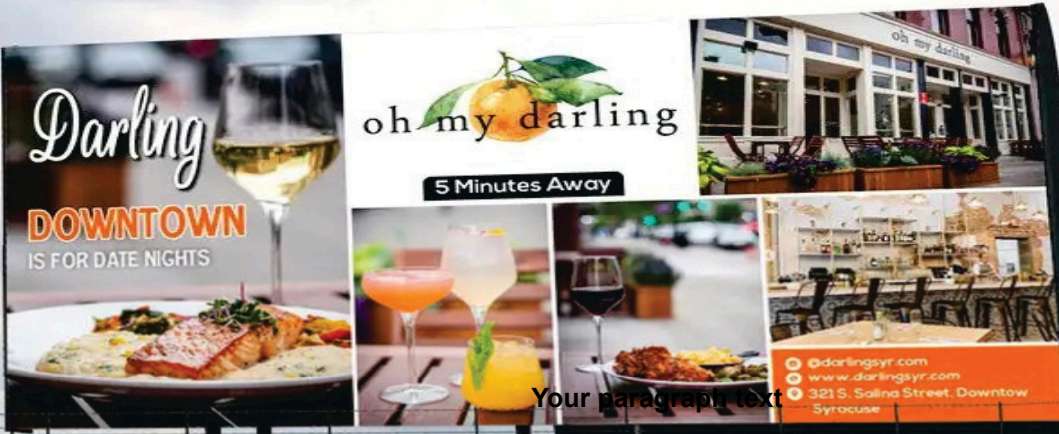


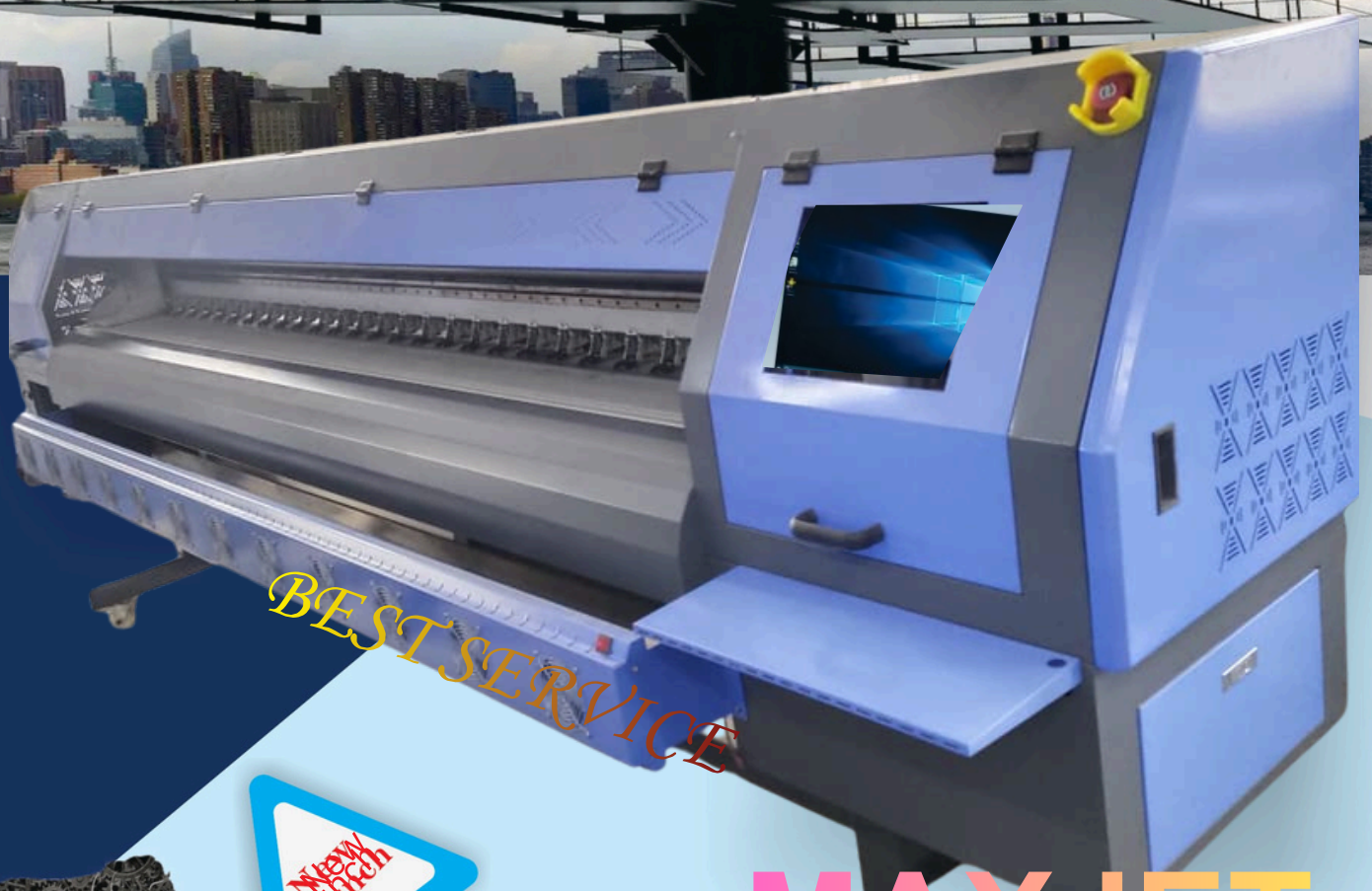
SWITCH TO ADVANCED *SIGNAGE* PRINTING



With New Takeup System



Your paragraph text



BEST SERVICE



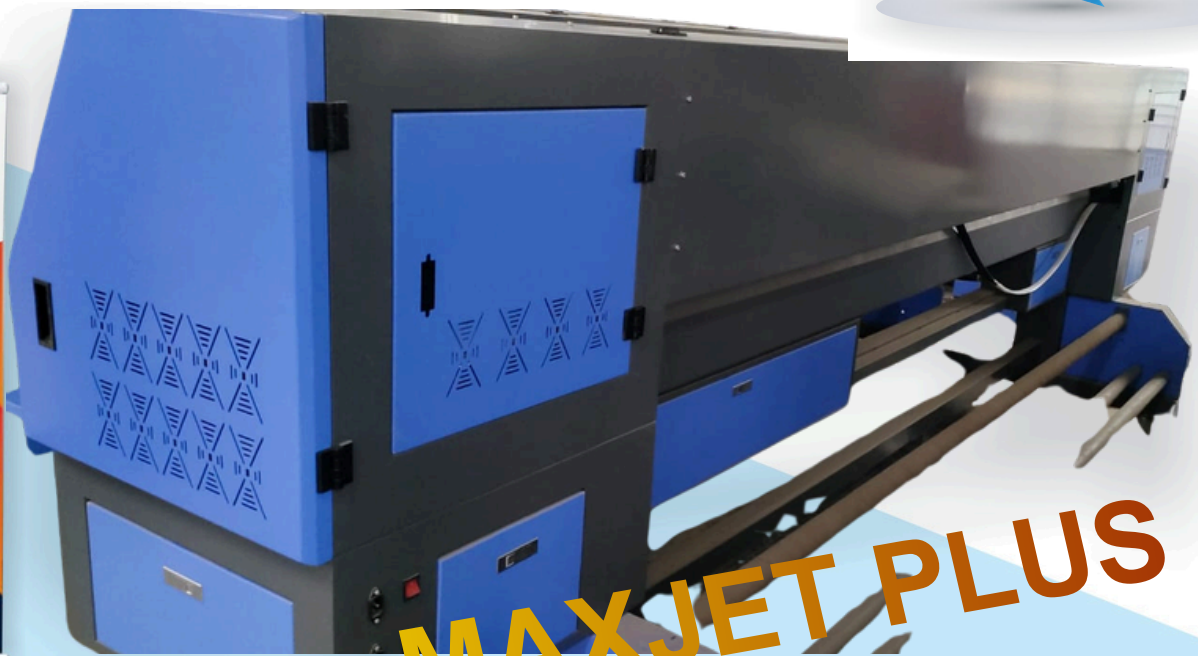
MAXJET



PHOTOREAL QUALITY
FOR HIGH VALUE
BUSINESS

MAXJET PLUS

HIGH QUALITY PHOTOREAL
ECO SOLVENT PRINTER



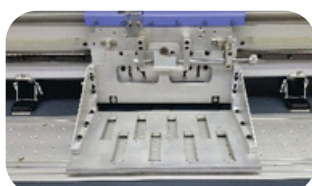
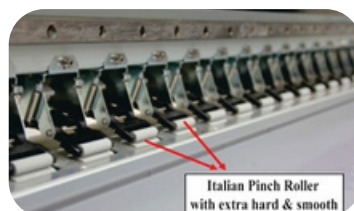
MAXJET PLUS

MAXJET PLUS is a 3.2 Meter solvent printer that best combine of high quality and high production speed. This newly launched MAXJET PLUS is signature flagship product with its well - renowned robust body combination with improved & advanced features. is the best solution for outdoor advertising applications customers, who need the quality print at a very high speed. It is ideal for sign shops and commercial printers seeking to upgrade the quality and offer greater versatility and speed at an optimally cost-effective price. It is also an excellent solution for corporate in - house production of exhibition graphics, posters, signage, billboard, etc.

Solvent Printer with Konica Minolta 512 42pl Head

SPECIFICATIONS

MAXJET PLUS 3304KHI SOLVENT PRINTING MACHINE				
Model	Maxjet3304 KH/PL		Maxjet3308 KH/PL	
Print Head	KONICA 512 42/35pl		KONICA 512 42/35pl	
Number of Printhead	4		8	
Number of Head Nozzle	1024		1024	
Maximum Bed Print width	3300mm		3300mm	
Maximum Print Width	3200mm		3200mm	
Print Speed :	w/o Feather	With Feather	w/o Feather	With Feather
360X360,2 Pass	93 spm/hr	62 spm/hr	186 spm/hr	130 spm/hr
480x360,2Pass	CMYK	43 spm/hr	124 spm/hr	86 spm/hr
360x540,3Pass	Paper ,Advertising Banner,PVC,Mesh,Vinyl,Window,Film & Canvas		160 spm/hr	112 spm/hr
Color	Up to 1440 dpi			
Media	Auto Feeding, Auto Take up /Roll Less than 85kg			
Resolution	JMC X Motor &Driver and Y Ac Servo Motor &Driver for High Speed Printing			
Media Feeding	(Panasonic optional)			
Motion Control	Negative Pressure Cleaning ,Solvent Cleaning & Anti Clogging Flash Function			
Auto Cleaning System	Per Heater, Bed & Post Heater Infrared Heater & Cooling Fan System both			
Media Heating	Bitmap,JPEG,PDF,TIFF (Recommended)			
Image Format	Superior ICC Profile			
Color Management	RIP and print not same time : print after RIP			
Work Flow	USB 2.0/ 3.0			
Print interface	Eco-solvent/solvent Based Ink			
Ink Type	Photo Print / Maintop / Ultra print (Recommended)			
Software	5mm (Maximum)			
Print Head Height	Windows 7, 64 bit & Window 10, 64bit (Recommended)			
Work Station	200V- (+10%) > 15A, 50Hz / 60Hz			
Voltage	2600w (220AC)			
Power Consumption	Temperature : 20 C- 26 C, Humidity : 40% -60%			
Working Environment	Length: 4.50M: Width: 1.15M: Height : 1.55 M			
Machine Dimention	Gross 900kg ; Net Weight : 700kg			
Machine Weight				





**GOLDTECH DELIVERS
IMPECCABLE PRINT
RESULTS & FLAWLESS
SERVICE ACROSS
THE INDIA**



GOLDTECH GRAPHICS PRIVATE LIMITED

Corp. Office : 1900/11, ChunaMandi, Paharganj, NewDelhi-110055

Factory: 15/8, SAHIBABAD SITE-IV INDUSTRIAL AREA, SAHIBABAD, GHAZIABAD, U.P.- 201010

BRANCHES:

Bhopal : 2nd Floor, Kusum Tower, Manohar Dairy, Zone-1, M.p. Nagar, Bhopal, M. P. - 462023

Mumbai : Shop No, Sanskriti 01, Near Kotak Mahindra Bank , Shanti Vihar Mira Road, Mumbai M.h.- 401107

Siliguri : Shop No. 33, 1st Floor, City Plaza, Sevoke Road, Opposite Payal Cinema, Siliguri, W.b. -734001

Kolkata : Office No. 4q, 4th Floor, Toddi Mansion, Opposite Poddar Court, Kolkata. W.b. -700073

Hyderabad : Shop No.106, First Floor, Downtown Mall, Behind Lotus Hospital, Lakdi-ka-pul, Hyderabad, Telangana- 500001

Patna : Behind Asia Hospital , Dhanki Mor, Agamkuan Kankarbagh Main Road Patna, Bihar - 800026